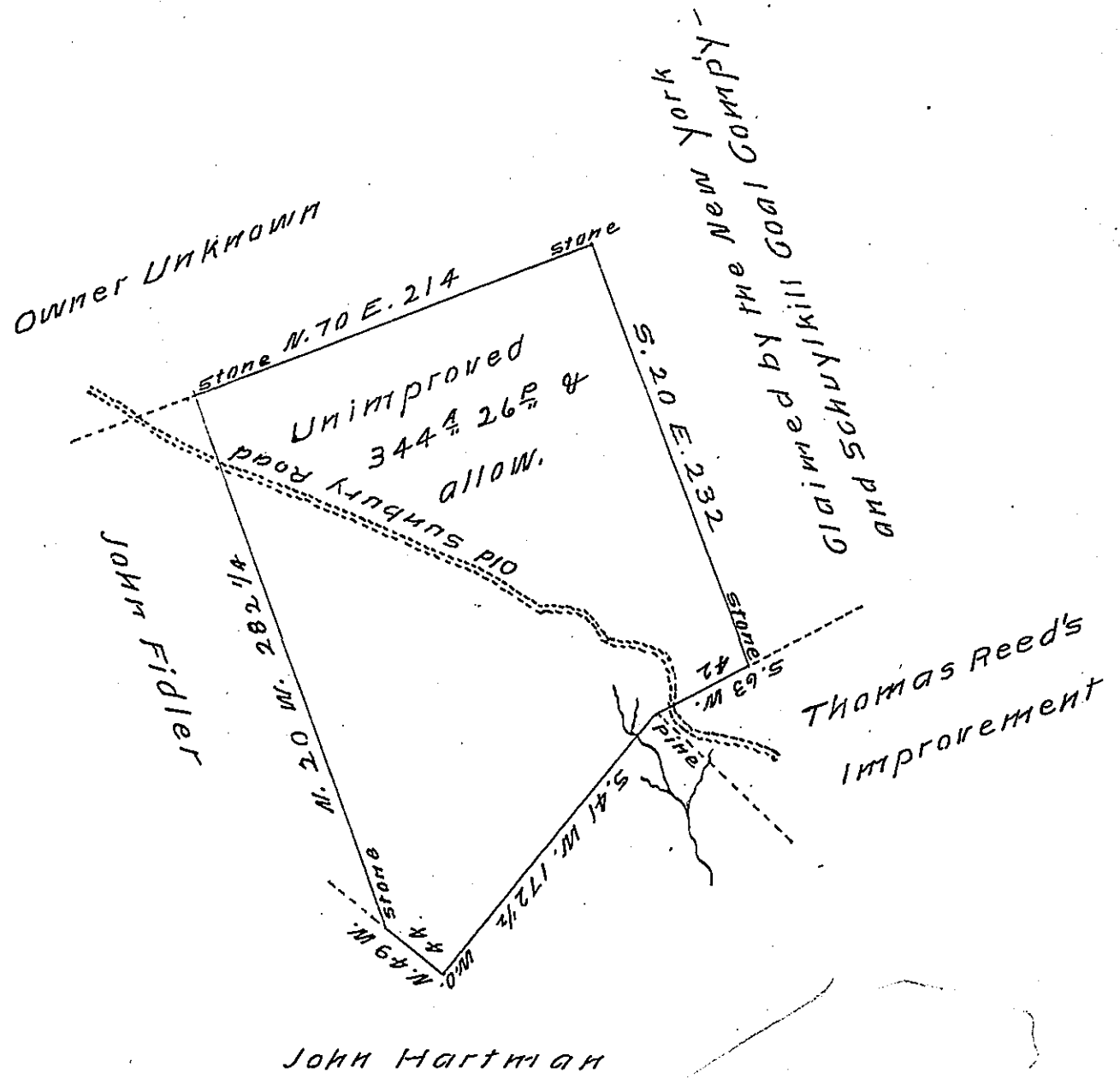


FORM No. 1.



Situate in Barry township Schuylkill County containing three hundred and forty four acres and twenty six perches and the allowance of six per cent Surveyed on the 29th day of December 1829 in pursuance of a warrant dated the 30th day of August 1829 granted to John Keiser. Surveyed by John Dreher for F. Lauderbrun Esq. D.S. July 30th 1831

To Jacob Spangler Esquire } W. Jackson D.S.
 Surveyor General }

Part of the land included in the above survey is claimed by Samuel Young Esq. of Baltimore by survey on warrant to Philip Myer dated May 5th 1794, and part is claimed by the New York and Schuylkill Coal Company by surveys on warrants to John Shomo & Susanna Sillyman respectively dated November 18th 1793.

W. Jackson D.S.

IN TESTIMONY that the above is a copy of the original remaining on file in the Department of Internal Affairs of Pennsylvania, made conformably to an Act of Assembly approved the 16th day of February 1833, I have hereunto set my hand and caused the Seal of said Department to be affixed at Harrisburg, this Fourteenth day of January 1908

Henry Horvath
 Secretary of Internal Affairs.